



# MILWAUKEE VOLLEYBALL GAME NOTES

10 NCAA TOURNAMENTS | 14 CONFERENCE CHAMPIONSHIPS | 12 ALL-AMERICANS

MKEPanthers.com || @MKE\_Volleyball || #ForTheMKE || Contact: Sean Engel || Email: engelsf@uwm.edu || Office: 414-435-8118

## 2024 SCHEDULE / RESULTS

Date	Opponent	TV	Time
<b>August</b>			
30	No. 5 STANFORD	ESPN+	L, 0-3
31	vs. Western Illinois		W, 3-1
<b>September</b>			
1	at Northern Illinois	ESPN+	W, 3-2
5	at Southern Methodist	ESPN+	L, 0-3
6	vs. Loyola Marymount		L, 1-3
7	vs. Weber State		W, 3-1
10	at No. 8 Wisconsin	BIG+	L, 0-3
13	ILLINOIS STATE	ESPN+	W, 3-2
14	ST. THOMAS (MINN.)	ESPN+	L, 0-3
15	IOWA	ESPN+	W, 3-1
19	at DePaul	FLOSPORTS	L, 0-3
21	vs. UIC		L, 1-3
27	at Oakland *	ESPN+	W, 3-2
28	at Oakland *	ESPN+	W, 3-2
<b>October</b>			
1	at Green Bay *	ESPN+	W, 3-1
4	IU INDIANAPOLIS *		W, 3-0
5	IU INDIANAPOLIS *		W, 3-0
11	at Northern Kentucky *	ESPN+	W, 3-2
12	at Northern Kentucky *	ESPN+	L, 0-3
18	WRIGHT STATE *	ESPN+	W, 3-2
19	WRIGHT STATE *	ESPN+	L, 2-3
22	at Marquette	FLOSPORTS	L, 0-3
25	YOUNGSTOWN STATE *		W, 3-0
26	YOUNGSTOWN STATE *		W, 3-0
29	GREEN BAY *	ESPN+	W, 3-0
<b>November</b>			
1	at Purdue Fort Wayne *		W, 3-1
2	at Purdue Fort Wayne *	ESPN+	W, 3-1
8	at Robert Morris *		W, 3-2
9	at Robert Morris *		W, 3-0
15	CLEVELAND STATE *	ESPN+	6:00 pm
16	CLEVELAND STATE *	ESPN+	2:00 pm
22	Horizon Quarterfinals ^	ESPN+	BYE
23	Horizon Semifinals ^	ESPN+	TBA
24	Horizon Championship ^	ESPN+	TBA

\*Horizon League Game | ^ Horizon Postseason  
All times Central

### HOME MATCHES IN BOLD

### HOME BROADCAST INFORMATION

ESPN+ | ESPN App | @ESPNplus  
Matt Menzl | @MMenzl

ESPN+ is offered at a price of \$11.99/month or \$119.99/year.  
Fans can sign-up or cancel at anytime.

It is also available as part of a bundle offer that gives subscribers access to Disney+, Hulu, and ESPN+ starting at \$16.99/month.

## MILWAUKEE PANTHERS



### 2024 RECORD

19-10 Overall  
14-2 Horizon

### ALL-TIME RECORD (Div. I)

605-449 Overall  
328-146 Conference

### SUSIE JOHNSON

Career Record: 324-269  
Record at MKE: 304-222

MATCH 30 / 31

## NOVEMBER 15 / 16 vs. CLEVELAND STATE

Klotsche Center | Milwaukee, Wis. | 6:00 pm / 2:00 pm | ESPN+



### VIKINGS

19-8 Overall  
10-6 Horizon

### ALL-TIME SERIES

Milwaukee Leads, 49-25  
Last Meeting: Nov. 17, 2023

### CHUCK VOSS

Career Record: 429-301  
Record at CSU: 429-301

## QUICK HITS

» Milwaukee has been on a roll winning a season-best seven consecutive matches entering play this weekend against Cleveland State. It's the Panthers' longest winning streak since the 2021 season, when they won 12 matches in a row from Sept. 24 to Oct. 25 of that season.

» Most recently, the Panthers took care of business at Robert Morris this past weekend, winning on Friday in five sets before sweeping the Colonials on Saturday afternoon in Pennsylvania.

» Leading the way for Milwaukee was Madi Malone with another 28 kills, while Natalie Schmitz added 22 and the Panthers got 19 from Alexis Lewis in the middle. As a team, the Panthers hit .285, while the defensive effort limited Robert Morris to just a .178 hitting percentage.

» Kara Erdmann covered the floor once again for the Panthers with 54 digs, while Josie Johnson had a strong weekend with 30 digs. Johnson added 46 assists on offense while Milica Tomic had 33 helpers against the Colonials.

» Milwaukee's block was strong once again as they outblocked RMU by an 18-10 margin. Lewis and Lakyn Graves had a team-best nine blocks, while Rachel Scott added five.

» The Panthers welcome in Cleveland State, who have won six of their last eight including a pair of weekend wins at home over Youngstown State. Liberty Torres paced the Vikings with 40 kills with a .382 hitting percentage, while Ella Mihacevich tallied 88 assists.

» Defensively, the Vikings had Emma Walker lead the way with 53 digs with Allana Appleby assisting on nine blocks as CSU had 15 blocks to the nine of Youngstown State.

» Milwaukee has had its share of hiccups of late against Cleveland State, dropping the last five matches including last season's Horizon League Quarterfinal bout. The Panthers do own a 49-25 all-time mark against the Vikings including a 28-6 record at home.

## HEAD TO HEAD

CATEGORY	MILWAUKEE	CLEVELAND STATE
Kills (Team/Opp)	1,411/1,429	1,326/1,295
Errors (Team/Opp)	519/628	495/576
Attempts (Team/Opp)	4,112/4,244	3,843/3,853
Attacking Percent (Team/Opp)	.217/.189	.216/.187
Assists (Team/Opp)	1,294/1,351	1,238/1,214
Assists per Set (Team/Opp)	11.7/12.2	12.4/12.1
Service Aces (Team/Opp)	151/203	145/140
Digs (Team/Opp)	1,813/1,858	1,744/1,780
Total Blocks (Team/Opp)	214/222.5	227/157

**General Information**

Location	Milwaukee, Wis.
Founded	1885
Enrollment	24,836
Nickname	Panthers
Colors	Black and Gold
Facility / Capacity	Klotsche Center / 2,500
Affiliation	NCAA Division I
Conference	Horizon League
Chancellor	Mark Mone
Director of Athletics	Amanda Braun
Associate AD/SWA	Kathy Litza
Ticket Office Phone	414-229-5886

**Team History**

First Year of Volleyball	1973
All-Time Record	1172-702-9
First Year in Division I	1990
NCAA Division I Record	605-449
NCAA Tournament Appearances	10
Last NCAA Appearance	2013
Last NCAA Opponent	Wisconsin
Result	L, 3-0

**Volleyball Staff**

Head Coach	Susie Johnson
	Idaho State '93
Office Phone	414-229-4483
Associate Head Coach	Lindsey Vanden Berg
	Milwaukee '03
Assistant Coach	Katie Adams
	Parkside '19
Athletic Trainer	Katie Wissing
	Saint Louis '21

**Media Relations**

Director of Athletic Communications	Sean Engel
Office/Cell Phone	414-435-8118
E-mail	engelsf@uwm.edu
Assistant AD Communications	Chris Zills
Communications Assistant	Chip Kindt
Content Creation & Strategy	Rachel Klemp
Multimedia Services	Andrew Levesque
Athletics Website	www.mkepanthers.com

**2024 HORIZON LEAGUE STANDINGS**

Team	Horizon League			Overall			Strk
	W	L	Pct.	W	L	Pct.	
Wright State	15	1	.938	23	4	.852	W6
Milwaukee	14	2	.875	19	10	.655	W5
Cleveland State	10	6	.625	19	8	.704	L2
Green Bay	9	7	.562	12	16	.429	W2
Purdue Fort Wayne	8	8	.500	15	14	.517	L2
IU Indy	7	9	.438	13	16	.448	W2
Northern Kentucky	7	9	.438	11	16	.407	L6
Robert Morris	4	12	.250	9	18	.333	L2
Youngstown State	3	13	.188	9	19	.321	W2
Oakland	3	13	.188	7	21	.250	L3

**AROUND THE HORIZON LEAGUE**

<b>Oct. 26</b>	Purdue Fort Wayne 3, Northern Kentucky 2 Wright State 3, Green Bay 1 Oakland 3, IU Indy 0
<b>Oct. 29</b>	Wright State 3, Northern Kentucky 0 Robert Morris 3, Youngstown State 0 Cleveland State 3, Oakland 1 Purdue Fort Wayne 3, IU Indy 1
<b>Nov. 1</b>	Wright State 3, Robert Morris 0 Youngstown State 3, Oakland 2 IU Indy 3, Cleveland State 0 Green Bay 3, Northern Kentucky 0
<b>Nov. 2</b>	Youngstown State 3, Oakland 0 Wright State 3, Robert Morris 0 IU Indy 3, Cleveland State 1 Green Bay 3, Northern Kentucky 2
<b>Nov. 8</b>	Green Bay 3, IU Indy 1 Wright State 3, Purdue Fort Wayne 1 Northern Kentucky 3, Oakland 0 Cleveland State 3, Youngstown State 1
<b>Nov. 9</b>	IU Indy 3, Green Bay 1 Wright State 3, Purdue Fort Wayne 0 Northern Kentucky 3, Oakland 0 Cleveland State 3, Youngstown State 0
<b>Nov. 15</b>	Wright State at Oakland ..... 5:00 pm IU Indy at Northern Kentucky ..... 5:00 pm Youngstown State at Purdue Fort Wayne ..... 6:00 pm Robert Morris at Green Bay ..... 6:00 pm
<b>Nov. 16</b>	Robert Morris at Green Bay ..... 1:00 pm Wright State at Oakland ..... 1:00 pm IU Indy at Northern Kentucky ..... 1:00 pm Youngstown State at Purdue Fort Wayne ..... 2:00 pm
<b>Nov. 22-24</b>	Horizon League Championship at Highest Seed

**IT'S "MILWAUKEE"**

A lot has been made of the correct way to talk about the University of Wisconsin-Milwaukee, especially in the area of athletics. It would be appreciated if you would refer to the athletics teams as either "Milwaukee" or "MKE".

Milwaukee Athletics is making an effort to brand itself as "Milwaukee" instead of other references. Please avoid UW-Milwaukee, UW-M, Wisc.-Mil, UW-MIL, Wisconsin-Milwaukee, etc.

Your cooperation in this matter is greatly appreciated.

**2024 HORIZON LEAGUE PRESEASON POLL**

School (1st place votes)	Points
1. Wright State (9)	99
2. Northern Kentucky (1)	85
<b>3. Milwaukee</b>	<b>73</b>
4. Green Bay	71
5. Cleveland State	63
6. Oakland	53
7. Purdue Fort Wayne	38
T8. IU Indianapolis	26
T8. Robert Morris	26
10. Youngstown State	16

## MILWAUKEE VOLLEYBALL ROSTER

No.	Name	Pos.	Ht.	Yr.	Hometown (High School/College)	Pronunciation
1	Tatum Catalano	OH/RS	6-0	Sr.	Germantown, Wis. (Germantown)	TAY-tum cat-uh-LAH-no
2	Bri Geurts	RS/MB	6-0	Sr.	De Pere, Wis. (De Pere)	GERTS
3	Lakyn Graves	MB	6-2	Sr.	Menomonee Falls, Wis. (Sussex Hamilton/Omaha)	LAY-kin
4	Josie Johnson	S	5-7	Jr.	Burlington, Wis. (Waterford Union)	
5	Milica Tomic	S	5-7	Fr.	Dyer, Ind. (Lake Central)	mil-LEET-za TOE-meech
6	Alexis Lewis	MB	6-1	Sr.	Roscoe, Ill. (Hononegah Community/Memphis)	
7	Gabby Wire	OH	5-9	Fr.	Crystal Lake, Ill. (Crystal Lake South)	
8	Jenna Soerens	OH/RS	5-11	Fr.	Oostburg, Wis. (Oostburg)	SOAR-ins
9	Kati Goba	DS	5-4	So.	Mukwonago, Wis. (Wisconsin Lutheran)	GOE-buh
10	Czhen Beneby	MB	6-3	Sr.	West Palm Beach, Fla. (Alexander W. Dreyfoos/Virginia)	ZEN BEN-uh-bee
11	Natalie Schmitz	OH	6-1	Jr.	Ham Lake, Minn. (Blaine)	
12	Bella Lipski	MB	6-2	So.	Milwaukee, Wis. (Divine Savior Holy Angels)	
13	Kara Erdmann	DS	5-6	Jr.	Forreston, Ill. (Forreston)	
14	Madi Malone	OH	6-0	Sr.	Newark, Ill. (Newark)	
15	Emily Hansen	OH/RS	5-10	Fr.	Mayville, Wis. (Mayville)	
16	Rachel Scott	RS	6-2	Jr.	Belvidere, Ill. (Belvidere North)	
17	Hallie Cook	DS/L	5-8	Jr.	Springfield, Mo. (Springfield Catholic/UNC Greensboro)	HAL-lee

**Head Coach:** Susie Johnson (18th season)**Associate Head Coach:** Lindsey Vanden Berg (18th season)**Assistant Coach:** Katie Adams (first season)**Athletic Trainer:** Katie Wissing (third season)**Strength & Conditioning:** Bennett Reed (second season)

## TELEVISION/RADIO ROSTER



Tatum  
Catalano



Bri  
Geurts



Lakyn  
Graves



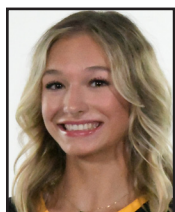
Josie  
Johnson



Milica  
Tomic



Alexis  
Lewis



Gabby  
Wire



Jenna  
Soerens



Kati  
Goba



Czhen  
Beneby



Natalie  
Schmitz



Bella  
Lipski



Kara  
Erdmann



Madi  
Malone



Emily  
Hansen



Rachel  
Scott



Hallie  
Cook



Susie  
Johnson

## TEAM BREAKDOWN

## Class

Seniors – 6  
Juniors – 5  
Sophomores – 2  
Freshmen – 4

## Position

Hitters – 8  
Middles – 4  
Setters – 2  
Defensive – 3

## Home State

Wisconsin – 8  
Illinois – 5  
Florida – 1  
Indiana – 1  
Minnesota – 1  
Missouri – 1

## Height

6-2 Plus – 4  
6-0 to 6-1 – 5  
5-8 to 5-11 – 4  
5-4 to 5-7 – 4

## Status

Returners – 11  
Freshmen – 4  
Transfers – 2



## GAME NOTES

**LOOKING AT CLEVELAND STATE**

Cleveland State under longtime head coach Chuck Voss is 19-8 as they head to Milwaukee this weekend with a 10-6 mark in Horizon League matchups. The Vikings have a pair of losses to Wright State and IU Indy, while also dropping matches to Purdue Fort Wayne and Northern Kentucky.

The Vikings are currently third in the Horizon League in hitting percentage at .216, just .001 behind Milwaukee for second. Defensively, Cleveland State is in second in the league with a .187 hitting percentage against, the Panthers are in third and just behind with a .189 hitting percentage against.

The offense is led by Liberty Torres and her 393 kills, while Nia Hall has chipped in with 310 this season. One of the top setters in the league is Ella Mihacevich, who enters the weekend just two assists shy for 1,000 for the season, while she is also the top server on the team with 32 aces in 2024.

The Vikings are currently the top blocking team in the Horizon League averaging 2.27 per set, as well as the top digging team in the league with an average of 17.44 digs per set. Allana Appleby leads the way up front with 87 blocks this season, while Emma Walker has been covering the floor for the Vikings with 525 digs and an average of 5.25 digs per set. Both of Walker's numbers are top-10 in all of NCAA Division I.

Cleveland State is currently in the driver's seat for the third seed in the upcoming Horizon League Championship but can slip a spot to fourth place. The Vikings need to win just one game against Milwaukee or have Green Bay drop one of two this weekend at home against Robert Morris.

**PLAYOFF PICTURE TAKING SHAPE**

Wright State and Milwaukee have clinched first round byes and will jockey for the top spot in the Horizon League standings to earn hosting duties for the postseason next weekend. The Raiders will need to drop both of its matches to Oakland, while Milwaukee will need to take both against Cleveland State for the tournament to be hosted by the Panthers at the Klotsche Center.

Cleveland State, Green Bay, and Purdue Fort Wayne are also locked into the tournament and will play in the quarterfinal round next Friday. Cleveland State is currently in third with Green Bay right on their heels in fourth. The Mastodons have clinched a berth, but can shift between the fourth seed, fifth seed, or sixth seed.

Battling it out for the final postseason berth are IU Indy and Northern Kentucky. Right now the Jaguars have the slimmest of advantages over the Norse, with multiple playoff scenarios needing to play out to ultimately determine who gets the sixth seed.

**UP NEXT**

Milwaukee will enter the Horizon League Championship bracket as one of the top two seeds, clinching a bye into the semifinal round on Saturday, Nov. 23. The Panthers still have a chance at the top seed and hosting rights with a pair of wins against Cleveland State, while Milwaukee will be rooting hard for Oakland to knock off Wright State twice this weekend.

**CELEBRATING OUR SENIORS**

On Saturday the Milwaukee volleyball team will celebrate the six members that compile its senior class: Czen Beneby, Tatum Catalano, Bri Geurts, Lakyn Graves, Alexis Lewis, and Madi Malone.

In their 425 combined Milwaukee matches entering play this weekend against Cleveland State, they have amassed 2,884 kills, 132 assists, 133 service aces, 1,546 digs, and 842 digs.

Catalano, Geurts and Malone have been four-year Panthers, while Beneby and Graves transferred to Milwaukee to start the 2022 season from Virginia and Omaha, respectively. Lewis joined the team this season as a transfer from Memphis.

**WELCOME HOME, ALUMNAE**

Friday evening, Milwaukee will be celebrating Alumnae Day as Panthers over the years will return to the Klotsche Center and be recognized for their contributions to the program!

**CLOSING IN ON THE SINGLE-SEASON MARK**

With 630 digs entering the final weekend of the regular season, Kara Erdmann currently has 630 digs and is averaging 5.68 digs per set. The single-season record for Milwaukee is currently held by Lauren Felsing, who had a program-best 645 digs during the 2008 season.

Felsing averaged 5.04 digs per set that season, while the single-season mark is 5.06 held by Jess Grabowski in 2019.

**SCHMITZ' OUTBURST EARNS WEEKLY HONORS**

With 46 kills, including a career-high 19 on Nov. 1 against Purdue Fort Wayne, Natalie Schmitz earned Horizon League Player of the Week honors as announced by the league on Monday. Schmitz had an impressive .356 hitting percentage with just nine errors on a team-best 104 swings over Milwaukee's three matches.

The award was the first weekly honor of Schmitz' career, as she also added a team-best five service aces last week along with 19 digs and a pair of blocks.

**1,000 CAREER DIGS: KARA ERDMANN EDITION**

With a career-best 630 digs this season, it came as no surprise that Kara Erdmann reached the 1,000 dig plateau for her career. Erdmann's 22 digs in the Nov. 2 win over Purdue Fort Wayne gave her exactly 1,000 with four matches left this regular season.

To break into the top-10 on the career list, Erdmann will need to reach 1,205 to tie Morgan Potter, who finished her career with 1,205 in 2011. The career record is held by Lauren Felsing with 1,929 digs.

**300 HEAD COACHING WINS**

After reaching several coaching milestones in 2023, Susie Johnson accomplished yet another during the team's win over Green Bay on Oct. 29 as she earned the 300th win as head coach of the Panthers.

Since joining the staff as an assistant, Johnson has been a part of 528 wins with Milwaukee. While her head coaching ledger now has 322 wins on it, which includes her 20 wins as the head coach of Parkside in 1993 and 1994.

**600 PROGRAM WINS**

With the team's win over Youngstown State Oct. 26, Milwaukee recorded its 600th victory while playing at the Division I level.

**THAT'S A LOT OF SWINGS**

With her 29 attacking attempts in the team's Oct. 26 win over Youngstown State, Madi Malone reached 3,945 attempts for her career. The number breaks the previous career mark of attacking attempts set by Laura Dallenbach, who finished her four years (1998-2001) with 3,932 career attempts. Malone has since become the first player with over 4,000 attempts in her career, and is currently at 4,136.

Against Youngstown State on Oct. 25-26, Malone also crossed into the top-10 all-time in sets played. She now has appeared in 459 career sets played, which is now fifth on the all-time list. The program's all-time leader is Ari Miller, who ended her career with 499 career sets played.

**ERDMANN'S PROGRAM RECORD**

Kara Erdmann has set and re-set her career-best in digs on four separate occasions this season, most recently recording 47 digs on Oct. 19 at home against Wright State. In reaching that mark, Erdmann set the Milwaukee match record for digs breaking the previous mark of 41 set by Becky Peters in 2005.

The record also broke the Horizon League mark of 45 set back during the 1989 season when Jessica Taylor of Butler had 45 against UIC on Sept. 12 of that season.

The 47-dig performance was also the highest dig total of any student-athlete at the Division I level in 2024, surpassing the 45 digs by Jada Willis of Drake against Bradley on Oct. 18, and the 45 of Peyton DeJardin of California against Syracuse on Oct. 12.

She ranks second in all of Division I with 630 total digs, and second in digs per set at 5.68 entering play this week.

**WITH SUCCESS COMES ACCOLADES**

Following her record-setting performance against Wright State on Oct. 19, Kara Erdmann was named Horizon League Player of the Week on Monday afternoon.

**COMING THROUGH IN THE CLUTCH**

In the team's Oct. 18 win over Wright State, Natalie Schmitz ended the match with 12 kills, including a team-best six kills in the deciding fifth set. All 12 of Schmitz' kills came in the three sets that the Panthers had won during the reverse sweep over the Raiders.

With her six fifth-set kills, she tied Madi Malone for most kills in a fifth set this season, tying Malone who had a half dozen against Northern Kentucky on Oct. 11. Thus far on the season, Schmitz has led Milwaukee four times in the fifth set with three against both NIU on Sept. 1 and Illinois State on Sept. 13. She also had a team-high two kills against Oakland on Oct. 27 in the fifth set.

**RECORD-SETTING NIGHT IN HIGHLAND HEIGHTS**

On Oct. 11, four Panthers set new career highs during the team's five-set win over the Northern Kentucky Norse at Regents Hall.

After reaching 17 kills on six separate occasions, Natalie Schmitz finally broke free of the number and had 18 against the Norse. Rachel Scott had reached a then-career-best nine kills on three separate occasions, including twice in 2024, before her first career double-digit kill total with 10 at NKU.

Also setting career-marks were Josie Johnson with 33 assists, eclipsing her previous high-water mark of 32 set against Western Illinois early last season.

**1,500 CAREER ASSISTS**

With her career match-best 33 assists at Northern Kentucky on Oct. 11, Josie Johnson became just the 11th player in Milwaukee program history to reach 1,500 career

## GAME NOTES

assists in her two-plus seasons with the Panthers.

Johnson now has 1,741 assists in her career and is closing in on the top-10 mark in program history, currently occupied by Kaley Blake with 1,760. Johnson would need to surpass the 2,000 assist mark to break into the top nine, currently occupied by Leanne Felsing with 2,264. The all-time program record is 5,276 set by Katie Schneider during her career from 1996-99.

**BACK-TO-BACK BELOW 10**

Against IU Indy on Oct. 4 and Oct. 5, the Panthers had fewer than 10 attacking errors, with six on Friday and five on Saturday.

It was the first time that Milwaukee had fewer than 10 attacking errors in back-to-back matches since 2021. On Nov. 11 at Robert Morris the Panthers had nine hitting errors and followed that up with just seven at Youngstown State in the regular season finale on Nov. 13.

Dating back to the beginning of rally scoring in 2001, Milwaukee has only accomplished the feat twice (2021 & 2024). In 2001, rally scoring was played until the winning team had 30 points, before it was reduced to 25 in 2008.

**LIVING ON THE EDGE**

Dating back to last season, the Panthers had won 11 consecutive five-set matches, with their last five-set loss coming to Villanova on Aug. 26, 2023. During the 2024 season, Milwaukee has gone 6-0 in five-set decisions before falling to Wright State on Oct. 19, the Panthers have since gone 1-0 restarting a new streak against Robert Morris on Nov. 8.

The stretch of five-set wins is now the longest in program history, with the previous mark of 10 coming back during the 1998 and 1999 seasons. In a single season, Milwaukee won eight consecutive five-set decisions in 1998 for the single-season mark.

**MILICA, THE ACE**

Putting together a strong game from behind the service line against Oakland on Sept. 27, Milica Tomic had five service aces, which placed her in a tie for fourth in terms of single-match success in five-set decisions in Panther history.

**1,000 CAREER DIGS: MADI MALONE EDITION**

During the team's win over Iowa on Sept. 15, Madi Malone recorded the 1,000th dig of her career as she makes a push towards the top-10 in the program's Division I history in digs. Currently the 10th position is occupied by Morgan Potter, who finished her career following the 2011 season with 1,205 digs.

Malone had a career-high 319 digs in 2023, after 289 as a sophomore and 292 during her freshman campaign and has 1,194 for her four-year career.

**REVERSE SWEEP**

Milwaukee has had three reverse sweeps on the season beginning with Illinois State on Sept. 13. In league play, Milwaukee completed the reverse sweep against Oakland on Sept. 27 and followed that up with a third against Wright State on Oct. 18.

**LEADING THE TEAM**

While many teams rely on one to two hitters to lead their offense, Milwaukee has had five different student-athletes lead the Panthers in kills through the team's season thus far.

Madi Malone has led the team in kills on 18 occasions while Natalie Schmitz has led the team eight times, Alexis Lewis and Bri Geurts have both led the team in kills on two occurrences this season. Rachel Scott has also led the team in kills once in 2024.

**SERVING UP AN ACE**

After collecting just three service aces in limited service action as a junior, Lakyn Graves has been the top servers for Milwaukee thus far with a team-best 30 service aces, which places her 16th in the Horizon League.

**MALONE DOUBLING UP**

With 14 double-doubles on the season, Madi Malone now has 50 double-doubles for her career.

Malone has 1,469 kills and is now in fourth on the Milwaukee all-time kills list and is 65 behind the third position occupied by Lauren Dallenbach with 1,534.

Her 1,194 digs are also the most among active players, as are her 123 matches played, 459 sets played, and 76 service aces.

**RECORD-SETTING CROWD**

On August 30, the Panthers hosted their first-ever top-five opponent with the Stanford Cardinal visiting the Klotsche Center. With a total of 1,581 in attendance, including a student crowd of 968, the attendance figure broke the previous mark that had stood since the 2006 season, when Milwaukee and No. 11 Wisconsin drew a crowd of 1,121 in the final match of that season's Panther Invitational.



# SUSIE JOHNSON

HEAD COACH

18TH SEASON / 28TH OVERALL

IDAHO STATE '93

**Head Coaching Records**

Head Coaching Record at Milwaukee: 304-222

Head Coaching Conference Record at Milwaukee: 195-91

Head Coaching Career Record: 324-269

**Career Coaching Records**

Total Career Record at Milwaukee: 530-293

Total Career Conference Record at Milwaukee: 313-105

Total Career Record: 575-375

**Postseason Appearances / Awards**

NCAA Tournament Berths: 10 \*

20-Win Seasons: 16 \*

Regular Season Titles: 14 \*

League Coach of the Year Titles: 5 \*

**Coaching Timeline**

2007-present - Milwaukee, Head Coach \*

1997-2006 - Milwaukee, Assistant Coach \*

1995-96 - Indiana State, Assistant Coach

1993-94 - Parkside, Head Coach

**Panthers Record When ...**

At Home .....	8-3
On the Road .....	9-5
At a Neutral Site .....	2-2
vs. Horizon .....	12-2
In Three-Set Matches .....	6-7
In Four-Set Matches .....	6-2
In Five-Set Matches .....	7-1
Winning the First Set .....	12-3
Leading After Two Sets .....	7-0
Trailing After Two Sets .....	3-5
Tied After Two Sets .....	9-3
On Weekdays .....	10-6
On Weekends .....	9-4
On Mondays .....	0-0
On Tuesdays .....	2-2
On Wednesdays .....	0-0
On Thursdays .....	0-2
On Fridays .....	8-2
On Saturdays .....	7-4
On Sundays .....	2-0
In August .....	1-1
In September .....	6-6
In October .....	8-3
In November .....	4-0

## 2024 SCHEDULE AND RESULTS

Date	Opponent	Score	Set-by-Set	Overall	Horizon	Time	Att.
<b>Aug. 30</b>	<b>No. 5 Stanford</b>	<b>L, 0-3</b>	<b>20-25, 25-27, 17-25</b>	<b>0-1</b>		<b>1:29</b>	<b>1,581</b>
<i>NORTHERN ILLINOIS TOURNAMENT (DeKalb, Ill.)</i>							
Aug. 31	vs. Western Illinois	W, 3-1	25-23, 22-25, 28-26, 25-23	1-1		2:26	104
Sept. 1	at Northern Illinois	W, 3-2	22-25, 25-18, 19-25, 25-19, 15-13	2-1		2:18	401
<i>SOUTHERN METHODIST TOURNAMENT (Dallas, Texas)</i>							
Sept. 5	at RV Southern Methodist	L, 0-3	12-25, 20-25, 12-25	2-2		1:17	217
Sept. 6	vs. Loyola Marymount	L, 1-3	25-12, 21-25, 15-25, 19-25	2-3		1:51	450
Sept. 7	vs. Weber State	W, 3-1	25-27, 25-20, 25-21, 25-13	3-3		1:59	150
Sept. 10	at Wisconsin	L, 0-3	13-25, 13-25, 14-25	3-4		1:16	7,096
<i>PANTHER INVITATIONAL (Milwaukee, Wis.)</i>							
<b>Sept. 13</b>	<b>ILLINOIS STATE</b>	<b>W, 3-2</b>	<b>21-25, 22-25, 25-20, 25-18, 15-7</b>	<b>4-4</b>		<b>2:25</b>	<b>503</b>
<b>Sept. 14</b>	<b>ST. THOMAS</b>	<b>L, 0-3</b>	<b>21-25, 22-25, 16-25</b>	<b>4-5</b>		<b>1:20</b>	<b>459</b>
<b>Sept. 15</b>	<b>IOWA</b>	<b>W, 3-1</b>	<b>25-21, 26-24, 23-25, 26-24</b>	<b>5-5</b>		<b>2:06</b>	<b>411</b>
<i>CHICAGO CUP (Chicago, Ill.)</i>							
Sept. 19	at DePaul	L, 0-3	19-25, 18-25, 21-25	5-6		1:21	512
Sept. 21	vs. UIC	L, 1-3	25-21, 22-25, 16-25, 15-25	5-7		2:01	193
Sept. 27	at Oakland *	W, 3-2	17-25, 23-25, 26-24, 25-19, 15-10	6-7	1-0	2:30	140
Sept. 28	at Oakland *	W, 3-2	13-25, 25-22, 25-22, 21-25, 15-10	7-7	2-0	2:23	122
Oct. 1	at Green Bay *	W, 3-1	25-23, 20-25, 25-19, 25-19	8-7	3-0	2:01	773
<b>Oct. 4</b>	<b>IU INDIANAPOLIS *</b>	<b>W, 3-0</b>	<b>25-17, 25-14, 25-18</b>	<b>9-7</b>	<b>4-0</b>	<b>1:12</b>	<b>462</b>
<b>Oct. 5</b>	<b>IU INDIANAPOLIS *</b>	<b>W, 3-0</b>	<b>25-17, 25-18, 25-16</b>	<b>10-7</b>	<b>5-0</b>	<b>1:15</b>	<b>288</b>
Oct. 11	at Northern Kentucky *	W, 3-2	22-25, 28-26, 22-25, 25-20, 16-14	11-7	6-0	2:37	603
Oct. 12	at Northern Kentucky *	L, 0-3	23-25, 18-25, 23-25	11-8	6-1	1:29	85
<b>Oct. 18</b>	<b>WRIGHT STATE *</b>	<b>W, 3-2</b>	<b>20-25, 22-25, 25-22, 25-17, 17-15</b>	<b>12-8</b>	<b>7-1</b>	<b>2:19</b>	<b>406</b>
<b>Oct. 19</b>	<b>WRIGHT STATE *</b>	<b>L, 2-3</b>	<b>25-13, 23-25, 23-25, 25-15, 13-15</b>	<b>12-9</b>	<b>7-2</b>	<b>2:21</b>	<b>422</b>
Oct. 22	at Marquette	L, 0-3	17-25, 16-25, 17-25	12-10		1:10	1,466
<b>Oct. 25</b>	<b>YOUNGSTOWN STATE *</b>	<b>W, 3-0</b>	<b>25-21, 25-23, 25-16</b>	<b>13-10</b>	<b>8-2</b>	<b>1:19</b>	<b>204</b>
<b>Oct. 26</b>	<b>YOUNGSTOWN STATE *</b>	<b>W, 3-0</b>	<b>25-16, 25-9, 25-22</b>	<b>14-10</b>	<b>9-2</b>	<b>1:14</b>	<b>340</b>
<b>Oct. 29</b>	<b>GREEN BAY *</b>	<b>W, 3-0</b>	<b>25-22, 25-19, 25-22</b>	<b>15-10</b>	<b>10-2</b>	<b>1:30</b>	<b>523</b>
Nov. 1	at Purdue Fort Wayne *	W, 3-1	25-17, 20-25, 25-14, 25-22	16-10	11-2	1:53	340
Nov. 2	at Purdue Fort Wayne *	W, 3-1	26-24, 21-25, 25-23, 25-20	17-10	12-2	1:58	262
Nov. 8	at Robert Morris *	W, 3-2	27-25, 21-25, 25-8, 21-25, 15-11	18-10	13-2	2:24	162
Nov. 9	at Robert Morris *	W, 3-0	25-23, 25-19, 25-17	19-10	14-2	1:27	167
<b>Nov. 15</b>	<b>CLEVELAND STATE *</b>					<b>6:00 pm</b>	
<b>Nov. 16</b>	<b>CLEVELAND STATE *</b>					<b>2:00 pm</b>	
<i>HORIZON LEAGUE CHAMPIONSHIP</i>							
Nov. 22-24	Horizon League Tournament ^						

Home Games in **BOLD** | \* Horizon League Match | ^ Horizon League Tournament



## 2024 MILWAUKEE MATCH-BY-MATCH

Date	Opponent	SP	Attack				Set			Serve				Recept			Blocking					BHE	POINTS	SCORE
			K	E	TA	PCT	A	TA	PCT	SA	SE	TA	PCT	RE	TA	PCT	DIG	BS	BA	BE	TOTAL			
08/30/2024	Stanford	3	29	15	79	.177	28	85	.329	5	6	63	.905	7	60	.883	32	1	8	0	5.0	0	39.0	0-3
08/31/2024	vs Western Ill.	4	55	16	228	.171	42	236	.178	9	10	99	.899	4	94	.957	91	5	14	0	12.0	0	76.0	3-1
09/01/2024	at NIU	5	58	19	183	.213	49	192	.255	6	10	105	.905	10	93	.892	77	1	10	0	6.0	2	70.0	3-2
09/05/2024	at SMU	3	23	13	68	.147	21	66	.318	2	9	46	.804	8	63	.873	10	0	4	2	2.0	0	27.0	0-3
09/06/2024	vs LMU (CA)	4	44	22	123	.179	39	114	.342	5	3	81	.963	7	78	.910	37	1	16	1	9.0	0	58.0	1-3
09/07/2024	vs Weber St.	4	54	18	162	.222	47	155	.303	6	9	99	.909	5	69	.928	76	0	14	1	7.0	0	67.0	3-1
09/10/2024	at Wisconsin	3	20	15	102	.049	19	105	.181	3	3	42	.929	8	68	.882	27	1	2	0	2.0	0	25.0	0-3
09/13/2024	Illinois St.	5	56	19	175	.211	51	175	.291	10	11	108	.898	3	88	.966	84	4	20	2	14.0	0	80.0	3-2
09/14/2024	St. Thomas (MN)	3	42	10	111	.288	42	111	.378	2	4	61	.934	9	68	.868	47	1	2	1	2.0	0	46.0	0-3
09/15/2024	Iowa	4	60	22	189	.201	50	169	.296	8	1	99	.990	4	92	.957	80	3	20	1	13.0	0	81.0	3-1
09/19/2024	at DePaul	3	34	20	124	.113	30	124	.242	4	5	59	.915	5	69	.928	33	1	0	0	1.0	0	39.0	0-3
09/21/2024	vs UIC	4	47	34	170	.076	47	175	.269	1	11	79	.861	4	88	.955	75	3	8	0	7.0	0	55.0	1-3
09/27/2024	at Oakland	5	63	27	173	.208	58	172	.337	6	11	106	.896	5	97	.948	76	1	12	0	7.0	0	76.0	3-2
09/28/2024	at Oakland	5	67	32	191	.183	64	182	.352	4	8	99	.919	7	101	.931	79	3	2	3	4.0	0	75.0	3-2
10/01/2024	at Green Bay	4	54	15	129	.302	53	135	.393	4	7	94	.926	9	71	.873	59	0	10	1	5.0	0	63.0	3-1
10/04/2024	IU Indy	3	35	6	88	.330	31	86	.360	9	4	73	.945	6	46	.870	41	0	6	2	3.0	0	47.0	3-0
10/05/2024	IU Indy	3	40	5	92	.380	38	92	.413	8	2	74	.973	8	46	.826	43	0	12	1	6.0	0	54.0	3-0
10/11/2024	at Northern Ky.	5	77	34	223	.193	72	216	.333	5	8	112	.929	8	104	.923	100	4	12	0	10.0	1	92.0	3-2
10/12/2024	at Northern Ky.	3	36	24	119	.101	30	125	.240	5	6	65	.908	5	73	.932	46	6	6	0	9.0	0	50.0	0-3
10/18/2024	Wright St.	5	64	19	173	.260	58	173	.335	9	7	109	.936	13	97	.866	81	4	14	3	11.0	0	84.0	3-2
10/19/2024	Wright St.	5	66	18	192	.250	63	193	.326	3	2	110	.982	9	82	.890	118	2	18	1	11.0	0	80.0	2-3
10/22/2024	at Marquette	3	30	16	97	.144	28	107	.262	0	4	52	.923	4	63	.937	46	1	12	2	7.0	0	37.0	0-3
10/25/2024	Youngstown St.	3	44	14	106	.283	41	111	.369	3	5	73	.932	9	58	.845	51	0	8	0	4.0	0	51.0	3-0
10/26/2024	Youngstown St.	3	43	12	100	.310	40	107	.374	7	4	73	.945	6	44	.864	62	2	10	1	7.0	0	57.0	3-0
10/29/2024	Green Bay	3	45	10	118	.297	44	115	.383	3	6	74	.919	7	61	.885	58	1	16	2	9.0	0	57.0	3-0
11/01/2024	at Purdue Fort Wayne	4	55	12	143	.301	51	137	.372	6	4	94	.957	8	74	.892	72	1	22	0	12.0	1	73.0	3-1
11/02/2024	at Purdue Fort Wayne	4	55	24	149	.208	53	147	.361	9	7	96	.927	11	88	.875	74	0	22	1	11.0	0	75.0	3-1
11/08/2024	at Robert Morris	5	63	14	186	.263	58	184	.315	5	8	109	.927	6	85	.929	85	1	22	4	12.0	0	80.0	3-2
11/09/2024	at Robert Morris	3	52	14	119	.319	47	120	.392	4	3	73	.959	8	59	.864	53	0	12	2	6.0	0	62.0	3-0
Totals		111	1411	519	4112	.217	1294	4109	.315	151	178	2427	.927	203	2179	.907	1813	47	334	31	214.0	4	1776.0	
Opponents		111	1429	628	4244	.189	1351	4357	.310	203	195	2374	.918	151	2249	.933	1858	55	335	31	222.5	2	1854.5	

## Team Averages

Sets Played	Kills per set	Assists per set	Service aces per set	Digs per set	Blocks per set	Points per set	Ball handling error per set	Reception errors per set
111	12.71	11.66	1.36	16.33	1.93	16.00	0.04	1.83

## ACTIVE CAREER LEADERS

## Matches Played

Madi Malone	123
Bri Geurts	110
Josie Johnson	92
Natalie Schmitz	92

## Kills

Madi Malone	1,469
Natalie Schmitz	940
Bri Geurts	551

## Total Blocks

Lakyn Graves	240*
Bri Geurts	199
Czhen Beneby	160*
Madi Malone	143

\* - Milwaukee Statistics Only

## Consecutive Matches Played

Madi Malone	123
Josie Johnson	89
Natalie Schmitz	89

## Double-Figure Kills

Madi Malone	78
Natalie Schmitz	50
Bri Geurts	13

## Assists

Josie Johnson	1,741
Milica Tomic	490
Kara Erdmann	190

## Sets Played

Madi Malone	459
Bri Geurts	371
Josie Johnson	344
Natalie Schmitz	339

## Digs

Madi Malone	1,194
Kara Erdmann	1,054
Josie Johnson	533

## Double-Doubles

Madi Malone	50
Josie Johnson	11
Milica Tomic	10

## Double-Figure Digs

Madi Malone	64
Kara Erdmann	43
Kati Goba	12
Josie Johnson	11
Milica Tomic	10

## Service Aces

Madi Malone	76
Josie Johnson	58
Natalie Schmitz	51





## 2024 OVERALL STATISTICS

#	Player	SP	Attack					Set		Serve			RE	Dig		Blocking						PTS
			K	K/S	E	TA	PCT	A	A/S	SA	SE	SA/S		DIG	DIG/S	BS	BA	TOT/S	BLK/S	BE	BHE	
1	Catalano, Tatum	1	0	0.00	1	1	-1.000	0	0.00	0	0	0.00	0	0	0.00	0	0	0	0.00	0	0	0.0
2	Geurts, Bri	93	160	1.72	74	420	.205	5	0.05	0	0	0.00	0	40	0.43	2	27	29	0.31	8	0	175.5
3	Graves, Lakyn	111	164	1.48	64	445	.225	8	0.07	30	43	0.27	1	67	0.60	22	91	113	1.02	6	0	261.5
4	Johnson, Josie	111	26	0.23	0	111	.234	579	5.22	22	24	0.20	0	180	1.62	0	0	0	0.00	0	1	48.0
5	Tomic, Milica	111	7	0.06	0	54	.130	490	4.41	25	17	0.23	0	218	1.96	0	0	0	0.00	0	1	32.0
6	Lewis, Alexis	109	171	1.57	70	414	.244	4	0.04	0	0	0.00	0	18	0.17	9	70	79	0.72	4	0	215.0
7	Wire, Gabby	11	20	1.82	9	56	.196	0	0.00	0	0	0.00	1	5	0.45	0	0	0	0.00	0	0	20.0
9	Goba, Kati	108	1	0.01	2	30	-.033	59	0.55	17	17	0.16	50	168	1.56	0	0	0	0.00	0	0	18.0
10	Beneby, Czen	46	56	1.22	32	146	.164	1	0.02	0	1	0.00	0	17	0.37	3	22	25	0.54	4	1	70.0
11	Schmitz, Natalie	106	308	2.91	94	932	.230	6	0.06	27	31	0.25	28	98	0.92	4	22	26	0.25	5	0	350.0
12	Lipski, Bella	8	3	0.38	3	11	.000	0	0.00	0	0	0.00	0	0	0.00	0	6	6	0.75	3	0	6.0
13	Erdmann, Kara	111	2	0.02	2	17	.000	110	0.99	8	12	0.07	38	630	5.68	0	0	0	0.00	0	1	10.0
14	Malone, Madi	111	364	3.28	124	1056	.227	21	0.19	18	21	0.16	49	294	2.65	2	35	37	0.33	1	0	401.5
15	Hansen, Emily	6	2	0.33	4	9	-.222	0	0.00	0	0	0.00	0	1	0.17	0	1	1	0.17	0	0	2.5
16	Scott, Rachel	99	127	1.28	40	410	.212	9	0.09	0	0	0.00	0	64	0.65	5	60	65	0.66	0	0	162.0
17	Cook, Hallie	48	0	0.00	0	0	.000	2	0.04	4	12	0.08	0	13	0.27	0	0	0	0.00	0	0	4.0
MILWAUKEE		111	1411	12.71	519	4112	.217	1294	11.66	151	178	1.36	203	1813	16.33	47	334	214	1.93	31	4	1,776.0
Opponents		111	1429	12.87	628	4244	.189	1351	12.17	203	195	1.83	151	1858	16.74	55	335	222.5	2.00	31	2	1,854.5

## 2024 HORIZON LEAGUE STATISTICS

#	Player	SP	Attack					Set		Serve			RE	Dig		Blocking						PTS
			K	K/S	E	TA	PCT	A	A/S	SA	SE	SA/S		DIG	DIG/S	BS	BA	TOT/S	BLK/S	BE	BHE	
1	Catalano, Tatum	1	0	0.00	1	1	-1.000	0	0.00	0	0	0.00	0	0	0.00	0	0	0	0.00	0	0	0.0
2	Geurts, Bri	46	73	1.59	37	185	.195	2	0.04	0	0	0.00	0	18	0.39	1	11	12	0.26	2	0	79.5
3	Graves, Lakyn	63	86	1.37	30	240	.233	4	0.06	13	18	0.21	1	41	0.65	14	58	72	1.14	5	0	142.0
4	Johnson, Josie	63	15	0.24	0	50	.300	351	5.57	13	12	0.21	0	118	1.87	0	0	0	0.00	0	0	28.0
5	Tomic, Milica	63	4	0.06	0	23	.174	300	4.76	18	6	0.29	0	124	1.97	0	0	0	0.00	0	0	22.0
6	Lewis, Alexis	62	106	1.71	32	232	.319	4	0.06	0	0	0.00	0	13	0.21	4	43	47	0.76	3	0	131.5
7	Wire, Gabby	9	19	2.11	9	53	.189	0	0.00	0	0	0.00	1	5	0.56	0	0	0	0.00	0	0	19.0
9	Goba, Kati	60	1	0.02	1	16	.000	39	0.65	16	12	0.27	33	90	1.50	0	0	0	0.00	0	0	17.0
10	Beneby, Czen	42	49	1.17	27	130	.169	1	0.02	0	1	0.00	0	16	0.38	3	19	22	0.52	4	1	61.5
11	Schmitz, Natalie	58	180	3.10	39	479	.294	4	0.07	16	16	0.28	19	63	1.09	2	11	13	0.22	5	0	203.5
12	Lipski, Bella	3	0	0.00	0	0	.000	0	0.00	0	0	0.00	0	0	0.00	0	1	1	0.33	1	0	0.5
13	Erdmann, Kara	63	1	0.02	2	6	-.167	73	1.16	4	11	0.06	28	389	6.17	0	0	0	0.00	0	1	5.0
14	Malone, Madi	63	234	3.71	75	635	.250	17	0.27	8	12	0.13	25	166	2.63	0	28	28	0.44	1	0	256.0
16	Scott, Rachel	55	91	1.65	27	251	.255	6	0.11	0	0	0.00	0	48	0.87	1	33	34	0.62	0	0	108.5
17	Cook, Hallie	17	0	0.00	0	0	.000	0	0.00	2	4	0.12	0	7	0.41	0	0	0	0.00	0	0	2.0
MILWAUKEE		63	859	13.63	280	2301	.252	801	12.71	90	92	1.43	125	1098	17.43	25	204	127	2.02	21	2	1,076.0
Opponents		63	751	11.92	379	2407	.155	721	11.44	125	94	1.98	90	1014	16.10	21	197	119.5	1.90	18	1	995.5

## 2024 SEASON BESTS

## ATTACK PERCENTAGE (min. 10 kills)

Team: .380 vs. IU Indy (Oct. 5)  
Opponent: .515 at SMU (Sept. 5)  
Individual: .577 (Malone) vs. IU Indy (Oct. 5)

## KILLS

Team: 77 at Northern Kentucky (Oct. 11)  
Opponent: 67 vs. Iowa (Sept. 15)  
Individual: 25 (Malone) at Northern Kentucky (Oct. 11)

## ASSISTS

Team: 72 at Northern Kentucky (Oct. 11)  
Opponent: 63 vs. Iowa (Sept. 15) & at Robert Morris (Nov. 8)  
Individual: 33 (Johnson) at Northern Kentucky (Oct. 11)

## DIGS

Team: 118 vs. Wright State (Oct. 19)  
Opponent: 113 vs. Western Illinois (Aug. 31)  
Individual: 47 (Erdmann) vs. Wright State (Oct. 19)

## SERVICE ACES

Team: 10 vs. Illinois State (Sept. 13)  
Opponent: 13 vs. Wright State (Oct. 18)  
Individual: 5 (Tomic) at Oakland (Sept. 27)

## TOTAL BLOCKS

Team: 14 vs. Illinois State (Sept. 13)  
Opponent: 17 vs. UIC (Sept. 21)  
Individual: 8 (Graves & Scott) Once Each



## 2024 SEASON &amp; CAREER HIGHS

**1 Tatum Catalano | Sr. | OH/RS****2024 Season Highs**

Kills ..... n/a  
 Attempts ..... 1 (10/11 at NKU)  
 Hitting % ..... n/a  
 Blocks ..... n/a  
 Digs ..... n/a  
 Aces ..... n/a  
 Assists ..... n/a

**Career Highs**

Kills ..... 4 (Twice)  
 Attempts ..... 12 (9/9/22 vs. LSU)  
 Hitting % .. 1.000 [1-0-1] (10/7/22 vs. CSU)  
 Blocks ..... 4 (Twice)  
 Digs ..... 4 (10/8/22 vs. OAK)  
 Aces ..... same  
 Assists ..... 1 (Twice)

**4 Josie Johnson | Jr. | S****2024 Season Highs**

Kills ..... 3 (Twice)  
 Attempts ..... 16 (8/31 vs. Western Ill.)  
 Hitting % .. 1.000 [1-0-1] (8/30 vs. Stanford)  
 Blocks ..... n/a  
 Digs ..... 23 (11/8 at RMU)  
 Aces ..... 3 (Three Times)  
 Assists ..... 33 (10/11 at NKU)

**Career Highs**

Kills ..... 3 (Four Times)  
 Attempts ..... same  
 Hitting % ... 1.000 [2-0-2] (10/13/23 at OAK)  
 Blocks ..... 1 (Three Times)  
 Digs ..... same  
 Aces ..... 3 (Four Times)  
 Assists ..... same

**7 Gabby Wire | Fr. | OH****2024 Season Highs**

Kills ..... 13 (9/28 at OAK)  
 Attempts ..... 39 (9/28 at OAK)  
 Hitting % ..... .333 [1-0-3] (10/22 at Marq)  
 Blocks ..... n/a  
 Digs ..... 5 (9/28 at OAK)  
 Aces ..... n/a  
 Assists ..... n/a

**Career Highs**

Kills ..... same  
 Attempts ..... same  
 Hitting % ..... same  
 Blocks ..... same  
 Digs ..... same  
 Aces ..... same  
 Assists ..... same

**2 Bri Geurts | Sr. | RS/MB****2024 Season Highs**

Kills ..... 12 (9/27 at OAK)  
 Attempts ..... 28 (9/13 vs. Illinois State)  
 Hitting % ..... .667 [4-0-6] (10/1 at GB)  
 Blocks ..... 3 (Five Times)  
 Digs ..... 6 (8/31 vs. Western Ill.)  
 Aces ..... n/a  
 Assists ..... 2 (9/13 vs. Illinois State)

**Career Highs**

Kills ..... 15 (9/8/23 vs. Western Ill.)  
 Attempts ..... 30 (9/17/22 vs. New Mexico St.)  
 Hitting % ..... .750 [3-0-4] (Twice)  
 Blocks ..... 9 (10/8/22 vs. OAK)  
 Digs ..... 6 (Three Times)  
 Aces ..... 2 (Five Times)  
 Assists ..... 3 (Twice)

**5 Milica Tomic | Fr. | S****2024 Season Highs**

Kills ..... 2 (9/21 vs. UIC)  
 Attempts ..... 15 (8/31 vs. Western Ill.)  
 Hitting % ..... 1.000 [1-0-1] (Twice)  
 Blocks ..... n/a  
 Digs ..... 16 (10/19 vs. WSU)  
 Aces ..... 5 (9/27 at OAK)  
 Assists ..... 32 (9/28 at OAK)

**Career Highs**

Kills ..... same  
 Attempts ..... same  
 Hitting % ..... same  
 Blocks ..... same  
 Digs ..... same  
 Aces ..... same  
 Assists ..... same

**8 Jenna Soerens | Fr. | OH/RS****2024 Season Highs**

Kills ..... n/a  
 Attempts ..... n/a  
 Hitting % ..... n/a  
 Blocks ..... n/a  
 Digs ..... n/a  
 Aces ..... n/a  
 Assists ..... n/a

**Career Highs**

Kills ..... same  
 Attempts ..... same  
 Hitting % ..... same  
 Blocks ..... same  
 Digs ..... same  
 Aces ..... same  
 Assists ..... same

**3 Lakyn Graves | Sr. | MB****2024 Season Highs**

Kills ..... 12 (9/13 vs. Illinois State)  
 Attempts ..... 30 (8/31 vs. Western Ill.)  
 Hitting % ..... .667 [10-0-15] (10/26 vs. YSU)  
 Blocks ..... 8 (9/13 vs. Illinois State)  
 Digs ..... 6 (11/2 at PFV)  
 Aces ..... 3 (Four Times)  
 Assists ..... 2 (11/1 at PFV)

**Career Highs**

Kills ..... same  
 Attempts ..... 30 (Twice)  
 Hitting % ..... same  
 Blocks ..... 13 (9/3/21 vs. Arizona State)  
 Digs ..... 6 (Twice)  
 Aces ..... same  
 Assists ..... same

**6 Alexis Lewis | Sr. | MB****2024 Season Highs**

Kills ..... 11 (Twice)  
 Attempts ..... 24 (Twice)  
 Hitting % ..... .667 [4-0-6] (10/5 vs. IU Indy)  
 Blocks ..... 7 (9/6 vs. LMU)  
 Digs ..... 3 (10/18 vs. WSU)  
 Aces ..... n/a  
 Assists ..... 1 (Four Times)

**Career Highs**

Kills ..... 14 (10/8/21 vs. Wichita St.)  
 Attempts ..... 35 (10/15/21 at Tulane)  
 Hitting % ..... 1.000 [1-0-1] (Twice)  
 Blocks ..... same  
 Digs ..... 6 (9/3/22 at TCU)  
 Aces ..... 1 (8/27/22 vs. East. Washington)  
 Assists ..... 1 (Eight Times)

**9 Kati Goba | So. | L/DS****2024 Season Highs**

Kills ..... 1 (10/19 vs. WSU)  
 Attempts ..... 4 (8/31 vs. Western Ill.)  
 Hitting % ..... 1.000 [1-0-1] (10/19 vs. WSU)  
 Blocks ..... n/a  
 Digs ..... 13 (Twice)  
 Aces ..... 4 (10/4 vs. IU Indy)  
 Assists ..... 6 (10/11 at NKU)

**Career Highs**

Kills ..... 1 (Three Times)  
 Attempts ..... same  
 Hitting % ..... 1.000 [1-0-1] (Twice)  
 Blocks ..... 1 (9/1/23 vs. Mont. St.)  
 Digs ..... 16 (11/10/23 vs. CSU)  
 Aces ..... same  
 Assists ..... 8 (10/28/23 vs. RMU)

## 2024 SEASON &amp; CAREER HIGHS

**10 Czhen Beneby | Sr. | MB/RS****2024 Season Highs**

Kills ..... 9 (9/27 at OAK)  
 Attempts ..... 20 (9/27 at OAK)  
 Hitting % ..... .667 [2-0-3] (Twice)  
 Blocks ..... 5 (9/27 at OAK)  
 Digs ..... 3 (Three Times)  
 Aces ..... n/a  
 Assists ..... 1 (11/1 at PFW)

**Career Highs**

Kills ..... 15 (11/1/22 vs. PFW)  
 Attempts ..... 26 (11/5/22 at CSU)  
 Hitting % .. .800 [8-0-10] (9/23/22 vs. YSU)  
 Blocks ..... 6 (Four Times)  
 Digs ..... 5 (10/22 at YSU)  
 Aces ..... same  
 Assists ..... 1 (Five Times)

**13 Kara Erdmann | Jr. | DS****2024 Season Highs**

Kills ..... 1 (Twice)  
 Attempts ..... 5 (Twice)  
 Hitting % ..... 1.000 [1-0-1] (Twice)  
 Blocks ..... n/a  
 Digs ..... 47 (10/19 vs. WSU)  
 Aces ..... 2 (Twice)  
 Assists ..... 11 (11/2 at PFW)

**Career Highs**

Kills ..... 1 (Four Times)  
 Attempts ..... same  
 Hitting % ..... 1.000 [1-0-1] (Four Times)  
 Blocks ..... same  
 Digs ..... same  
 Aces ..... 2 (Three Times)  
 Assists ..... same

**16 Rachel Scott | Jr. | RS****2024 Season Highs**

Kills ..... 10 (Twice)  
 Attempts ..... 33 (10/11 at NKU)  
 Hitting % ..... .500 [6-1-10] (10/4 vs. IU Indy)  
 Blocks ..... 8 (9/15 vs. Iowa)  
 Digs ..... 6 (11/8 at RMU)  
 Aces ..... n/a  
 Assists ..... 2 (10/19 vs. WSU)

**Career Highs**

Kills ..... same  
 Attempts ..... same  
 Hitting % .750 [3-0-4] (9/22/23 vs. IU Indy)  
 Blocks ..... same  
 Digs ..... 6 (Twice)  
 Aces ..... same  
 Assists ..... 2 (Three Times)

**11 Natalie Schmitz | Jr. | OH****2024 Season Highs**

Kills ..... 19 (11/1 at PFW)  
 Attempts ..... 53 (10/19 vs. WSU)  
 Hitting % ..... .516 [16-0-31] (10/1 at GB)  
 Blocks ..... 4 (10/19 vs. WSU)  
 Digs ..... 10 (10/19 vs. WSU)  
 Aces ..... 4 (Three Times)  
 Assists ..... 1 (Six Times)

**Career Highs**

Kills ..... same  
 Attempts ..... 54 (9/8/23 vs. Western Ill.)  
 Hitting % .647 [11-0-17] (10/28/23 vs. RMU)  
 Blocks ..... 4 (Five Times)  
 Digs ..... same  
 Aces ..... same  
 Assists ..... 2 (9/12/23 vs. DePaul)

**14 Madi Malone | Sr. | OH****2024 Season Highs**

Kills ..... 25 (10/11 at NKU)  
 Attempts ..... 65 (10/11 at NKU)  
 Hitting % .577 [15-0-26] (10/5 vs. IU Indy)  
 Blocks ..... 4 (Twice)  
 Digs ..... 21 (9/7 vs. Weber State)  
 Aces ..... 3 (8/31 vs. Western Ill.)  
 Assists ..... 3 (11/8 at RMU)

**Career Highs**

Kills ..... 29 (10/1/21 vs. WSU)  
 Attempts ..... 66 (10/1/21 vs. WSU)  
 Hitting % ..... same  
 Blocks ..... 4 (Three Times)  
 Digs ..... same  
 Aces ..... 6 (10/27/23 vs. YSU)  
 Assists ..... 3 (Five Times)

**17 Hallie Cook | Jr. | DS/L****2024 Season Highs**

Kills ..... n/a  
 Attempts ..... n/a  
 Hitting % ..... n/a  
 Blocks ..... n/a  
 Digs ..... 4 (10/1 at GB)  
 Aces ..... 1 (Four Times)  
 Assists ..... 1 (Twice)

**Career Highs**

Kills ..... 16 (9/30 vs. Chattanooga)  
 Attempts ..... 48 (9/30 vs. Chattanooga)  
 Hitting % .500 [3-1-4] (9/22/22 vs. SC St.)  
 Blocks ..... 3 (9/16 vs. UNC Asheville)  
 Digs ..... 13 (Twice)  
 Aces ..... 2 (Five Times)  
 Assists ..... 2 (Twice)

**12 Bella Lipski | So. | MB****2024 Season Highs**

Kills ..... 3 (9/15 vs. Iowa)  
 Attempts ..... 8 (9/15 vs. Iowa)  
 Hitting % ..... .125 [3-2-8] (9/15 vs. Iowa)  
 Blocks ..... 4 (9/15 vs. Iowa)  
 Digs ..... n/a  
 Aces ..... n/a  
 Assists ..... n/a

**Career Highs**

Kills ..... 4 (10/27/23 vs. Youngstown St.)  
 Attempts ..... 8 (Twice)  
 Hitting % .. .500 [4-0-8] (10/27/23 vs. YSU)  
 Blocks ..... 5 (10/21/23 at IU Indy)  
 Digs ..... 2 (10/21/23 at IU Indy)  
 Aces ..... same  
 Assists ..... same

**15 Emily Hansen | Fr. | OH/RS****2024 Season Highs**

Kills ..... 1 (Twice)  
 Attempts ..... 4 (Twice)  
 Hitting % ..... n/a  
 Blocks ..... 1 (8/31 vs. Western Ill.)  
 Digs ..... 1 (9/7 vs. Weber State)  
 Aces ..... n/a  
 Assists ..... n/a

**Career Highs**

Kills ..... same  
 Attempts ..... same  
 Hitting % ..... same  
 Blocks ..... same  
 Digs ..... same  
 Aces ..... same  
 Assists ..... same